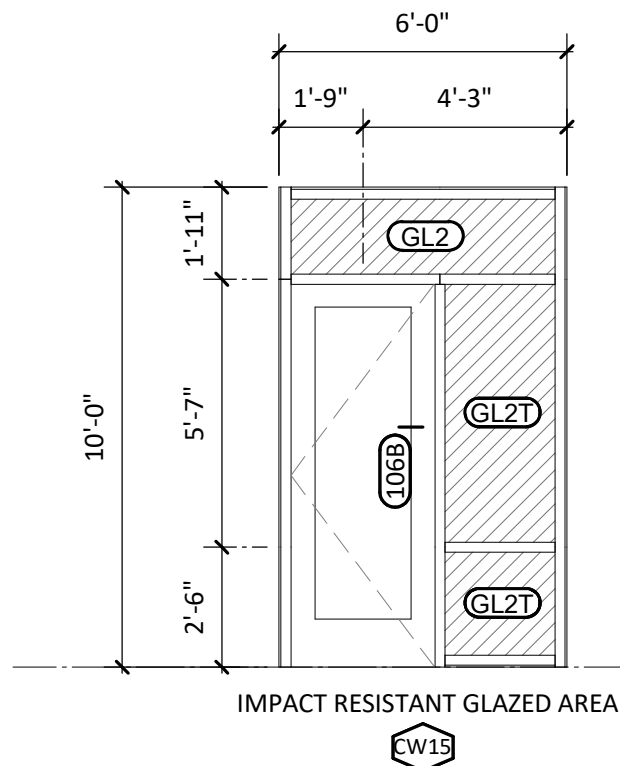


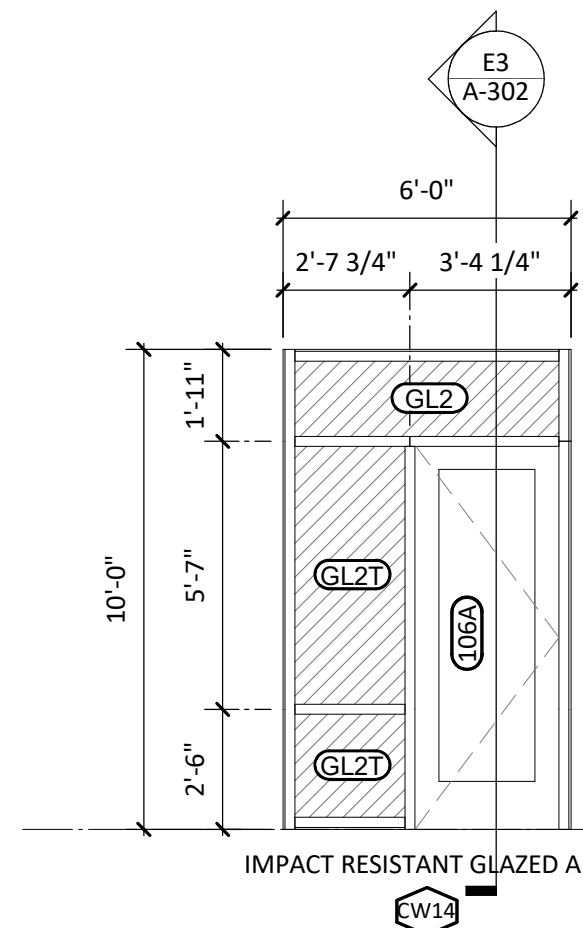
E



E1  
A-611

CW15

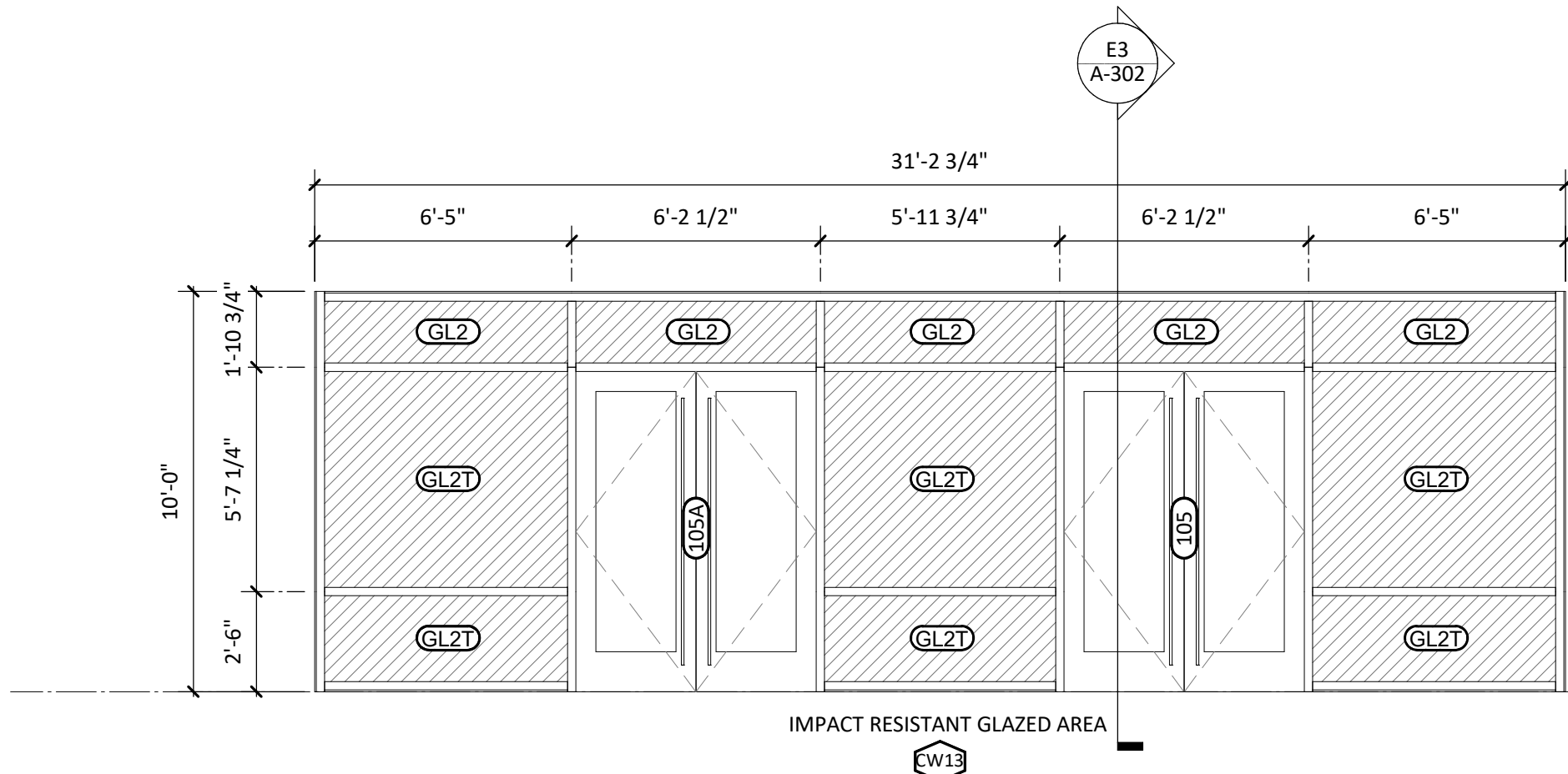
1/4" = 1'-0"



E2  
A-611

CW14

1/4" = 1'-0"

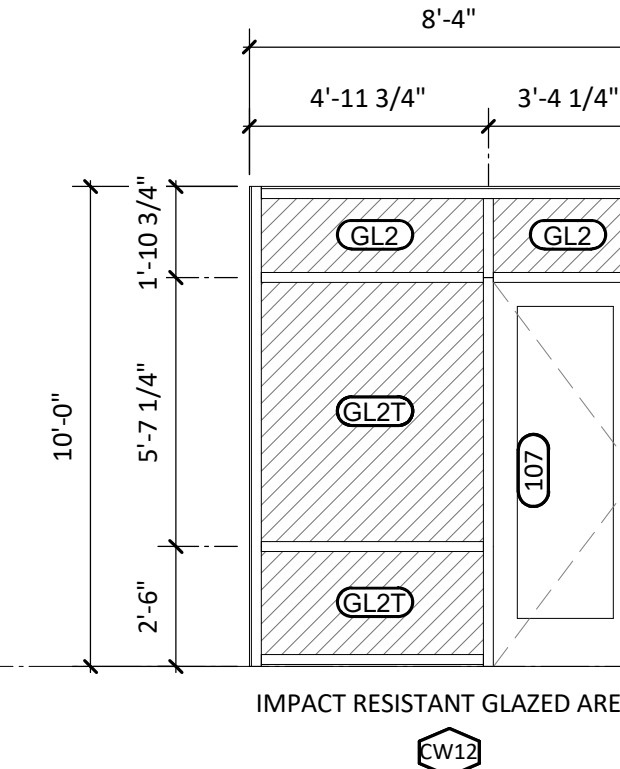


E3  
A-611

CW13

1/4" = 1'-0"

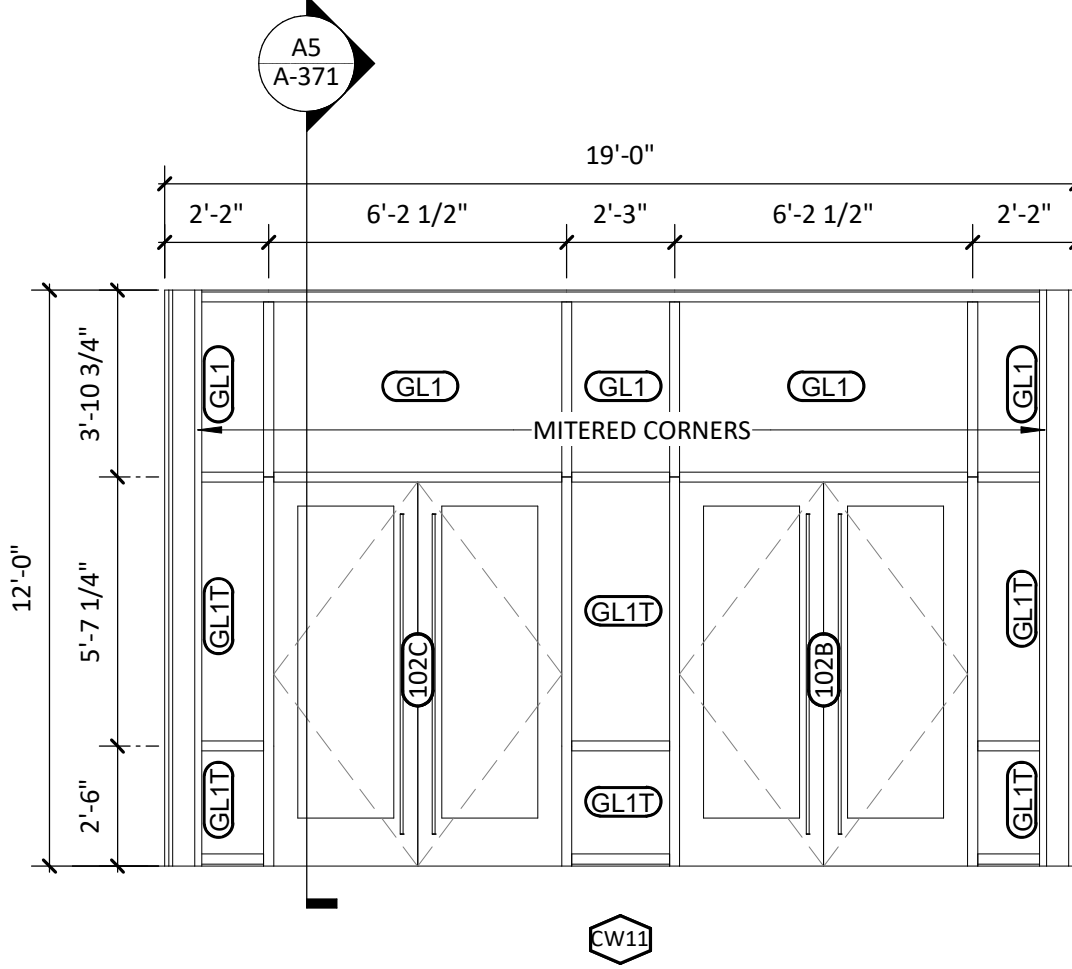
D



D1  
A-611

CW12

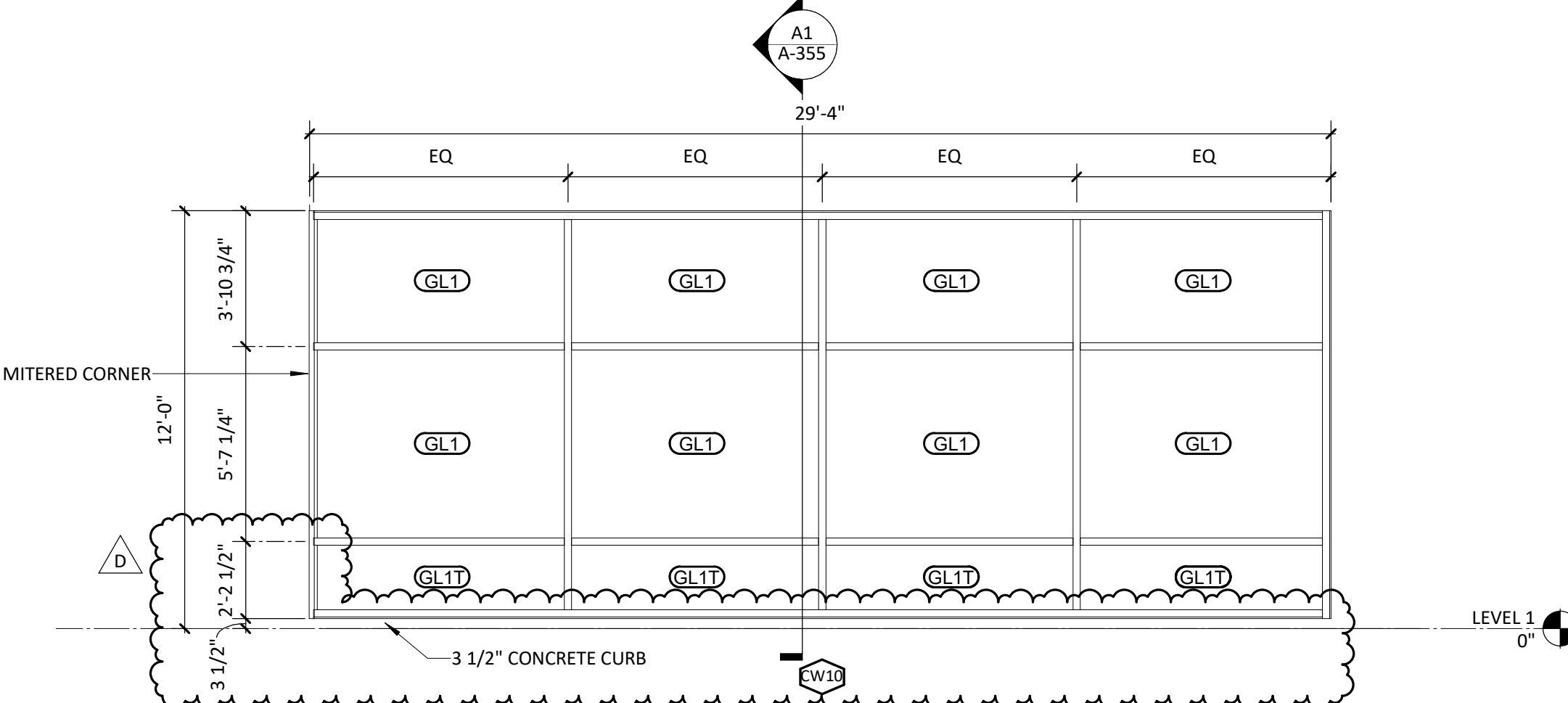
1/4" = 1'-0"



D2  
A-611

CW11

1/4" = 1'-0"

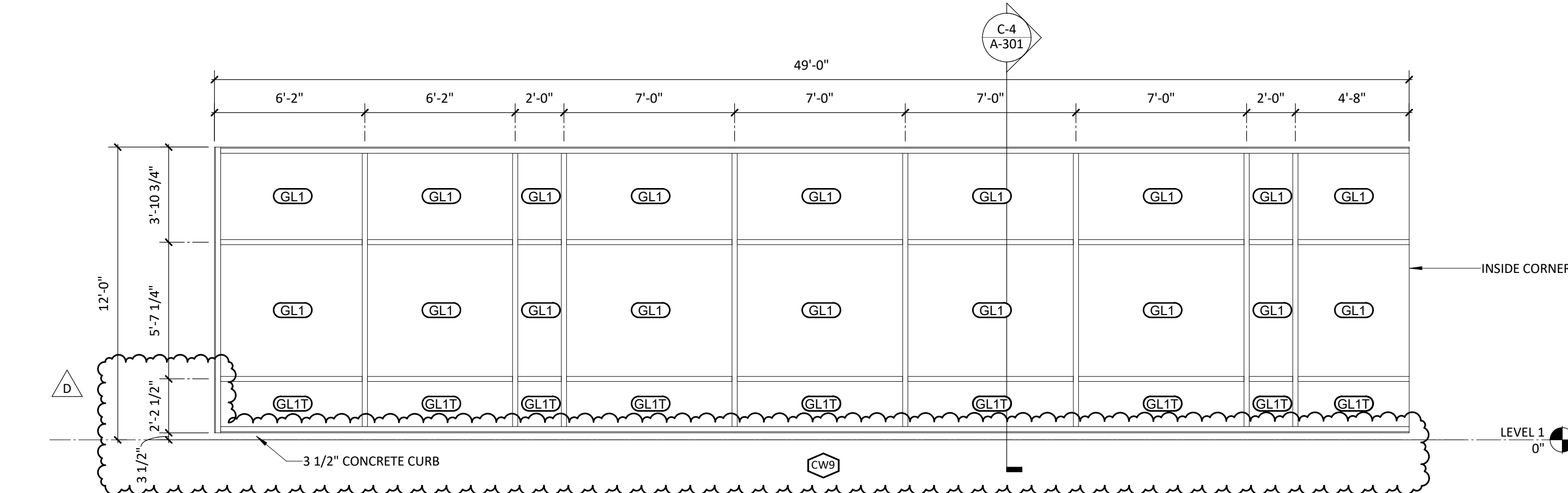


D3  
A-611

CW10

1/4" = 1'-0"

C

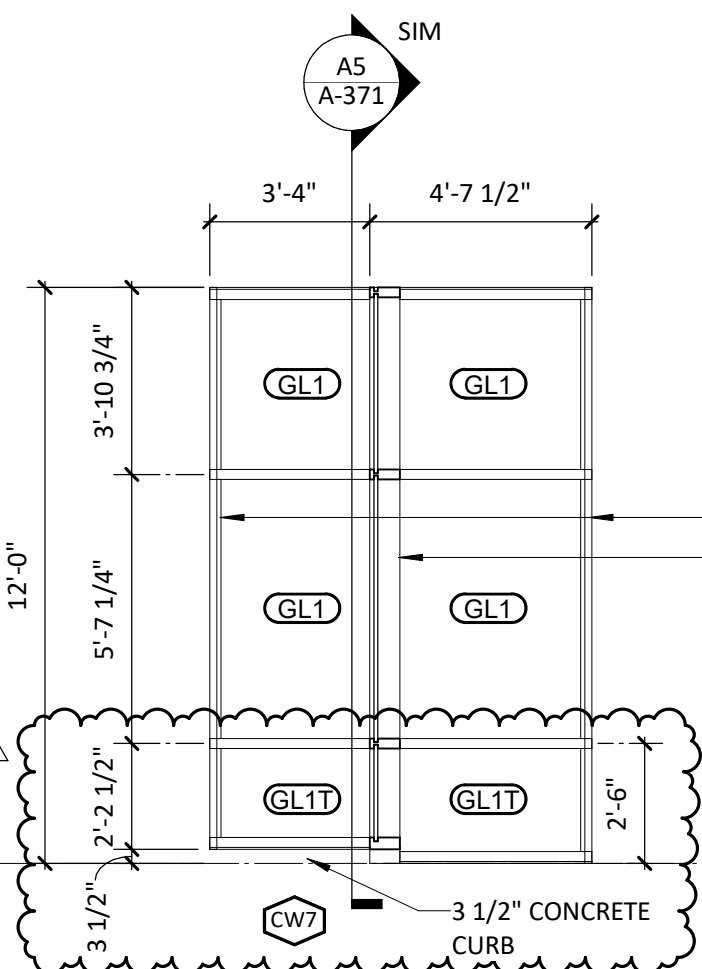


C1  
A-611

CW9

1/4" = 1'-0"

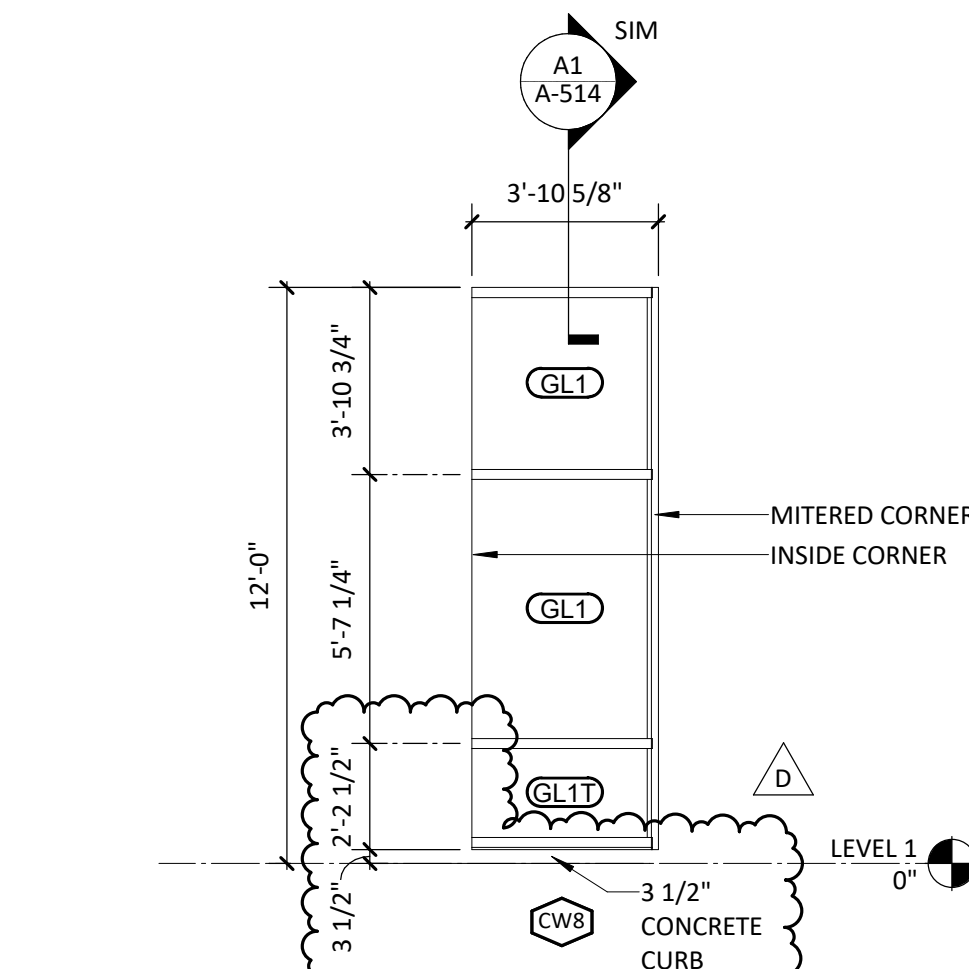
B



B1  
A-611

CW7

1/4" = 1'-0"

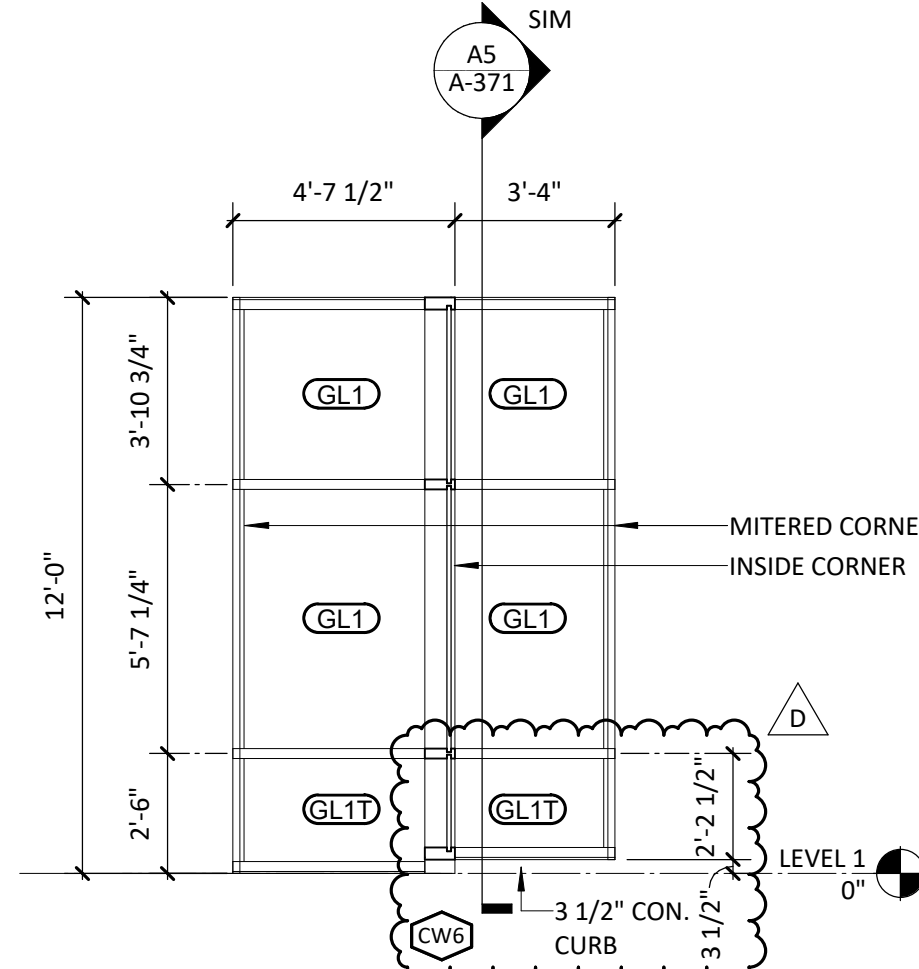


B2  
A-611

CW8

1/4" = 1'-0"

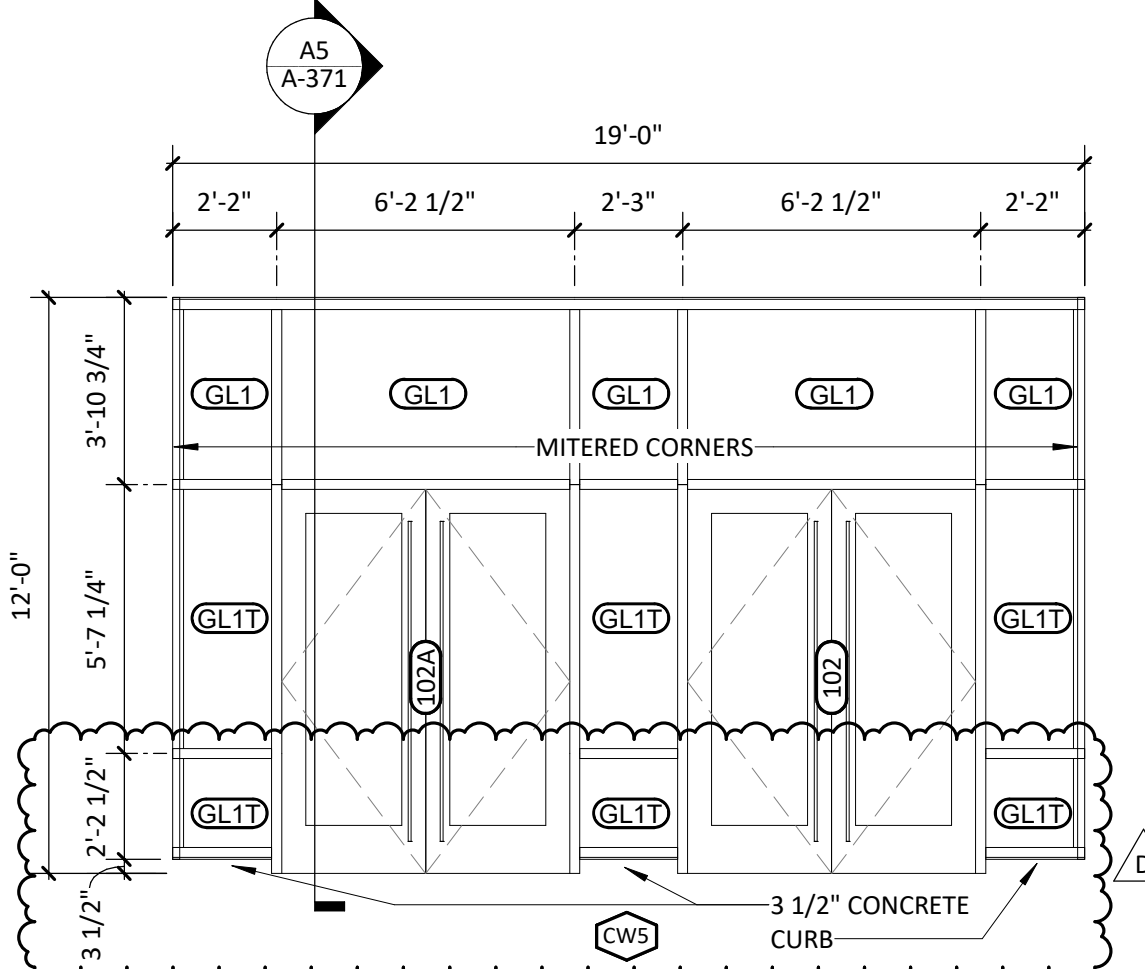
A



A1  
A-611

CW6

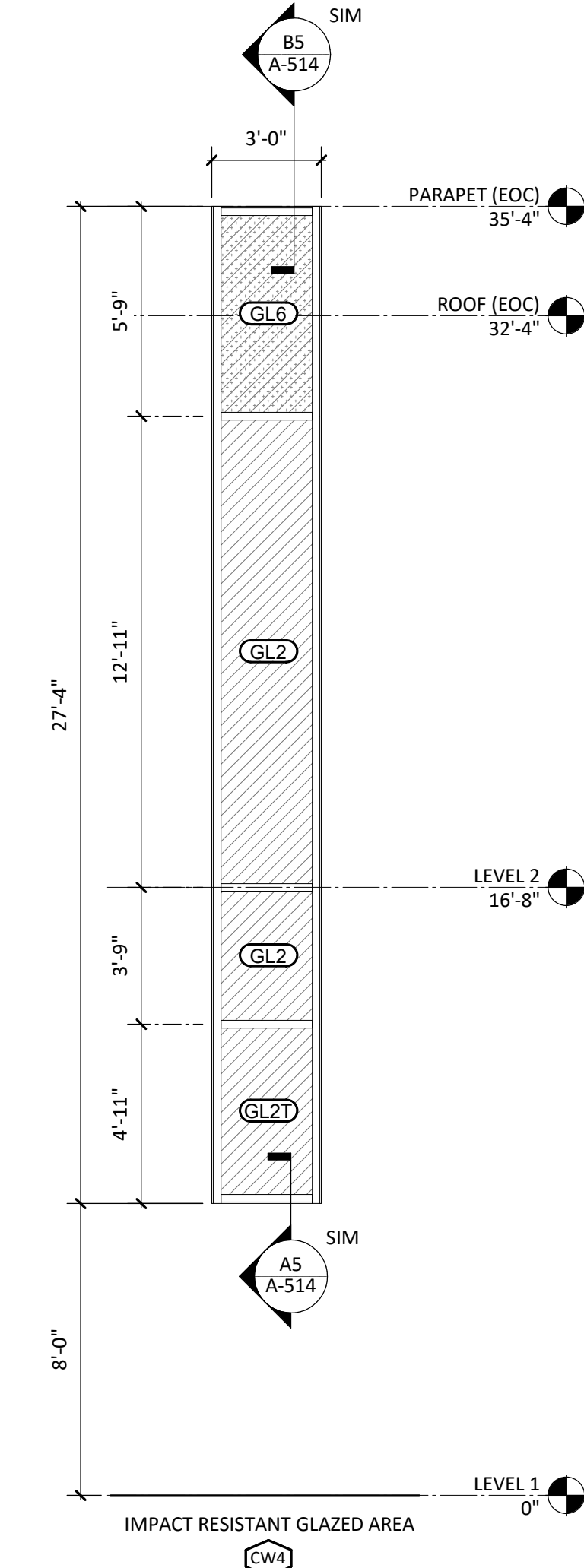
1/4" = 1'-0"



A2  
A-611

CW5

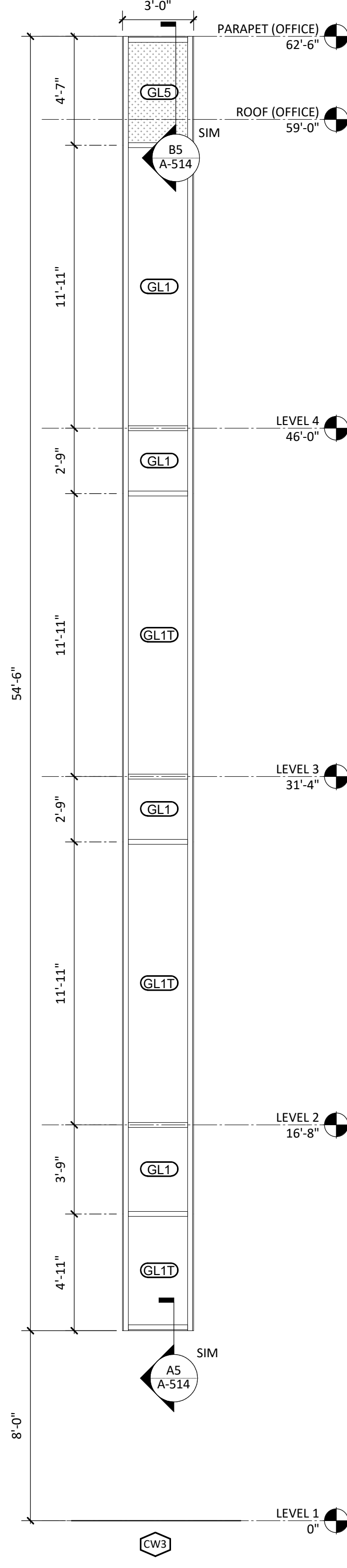
1/4" = 1'-0"



A3  
A-611

CW4

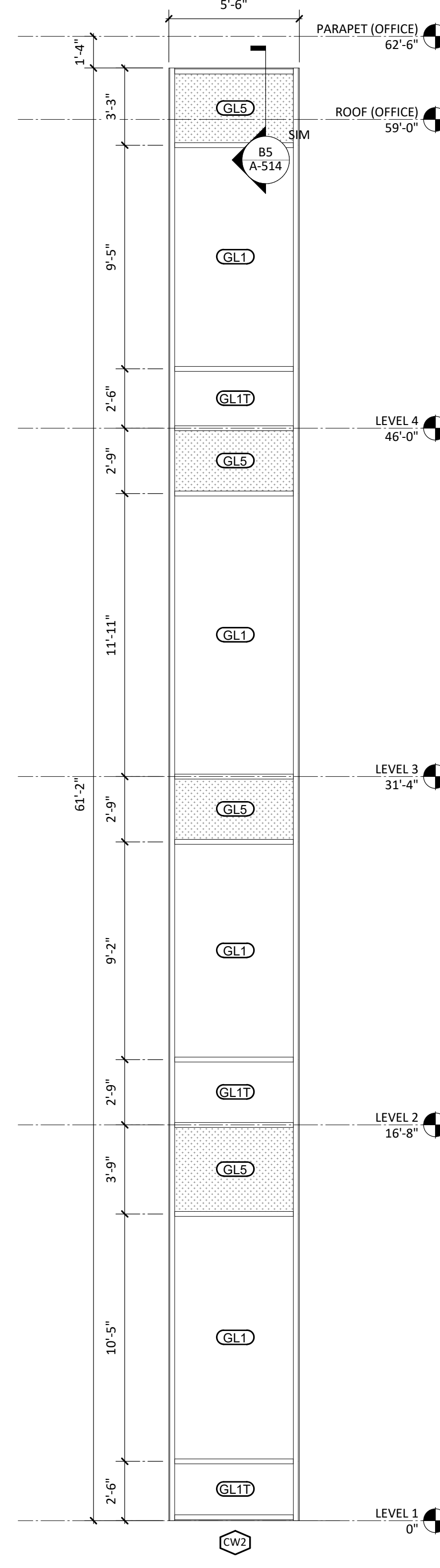
1/4" = 1'-0"



A4  
A-611

CW3

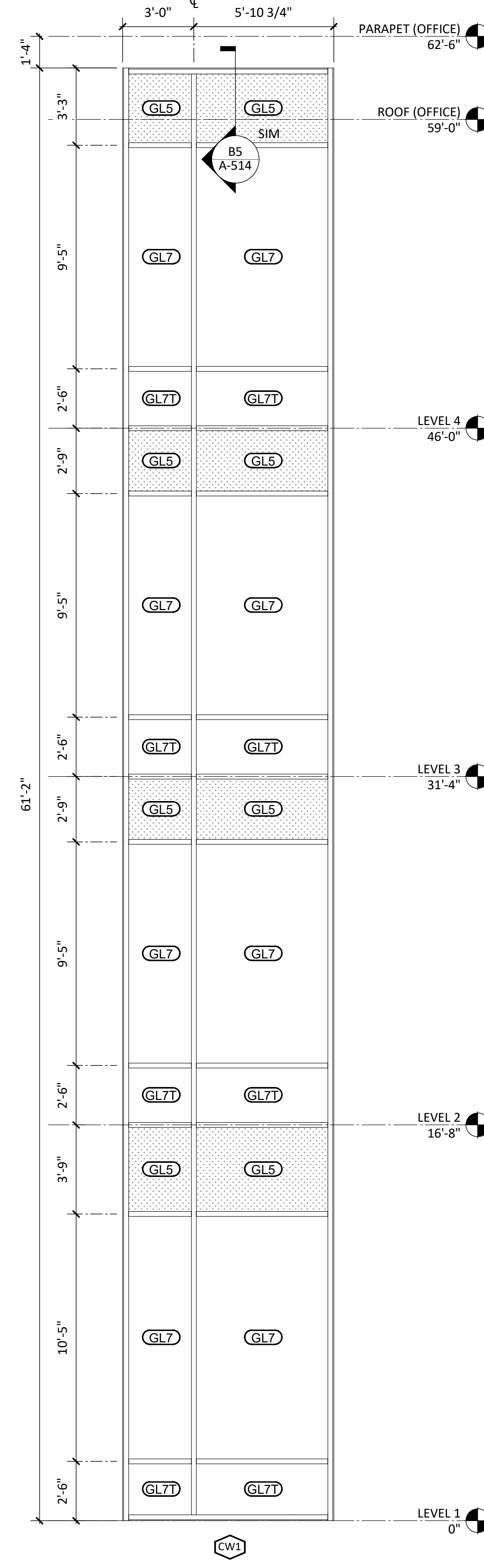
1/4" = 1'-0"



A5  
A-611

CW2

1/4" = 1'-0"



A6  
A-611

CW1

1/4" = 1'-0"

12/22/2020 2:30:32 PM

1

2

3

4

5

6

## GLAZING TYPES LEGEND

TYPE	DESCRIPTION
GL1	1" INSULATED GLAZING
GL2	1" INSULATED GLAZING - IMPACT RESISTANT
GL3	1/4" NON-INSULATED GLAZING
GL4	1/4" NON-INSULATED GLAZING - IMPACT RESISTANT
GL5	SPANDREL GLAZING
GL6	SPANDREL GLAZING - IMPACT RESISTANT
GL7	1" INSULATED CERAMIC FRITTED GLAZING (ALTERNATE BID)
GL8	1/2" NON-INSULATED GLAZING
ACM1	ACM SOLID PANEL
-T	"T" DENOTES TEMPERED GLASS LOCATION



CAPE FEAR FD STONEWATER



101 NORTH THIRD STREET, SUITE 500  
WILMINGTON, NORTH CAROLINA 28401  
TEL. 910.790.9901 FAX. 910.790.3111  
WWW.LS3P.COM



NOT FOR  
CONSTRUCTION

NHC Government Center 7702-190810

## NEW HANOVER COUNTY GOVERNMENT CENTER

GOVERNMENT CENTER DRIVE  
WILMINGTON, NC 28403

LS3P PROJECT: 7702-190810

A	DATE	DESCRIPTION
A	2020.08.18	C-5 DESIGN DEVELOPMENT
B	2020.10.16	C-5 PERMIT SET
C	2020.12.16	GMP SET
D	2020.12.22	ADDENDUM #1

SHEET NAME:  
CURTAIN WALL

ORIG SUBMISSION: 2020.12.16

CURRENT: 2020.12.22

ADDENDUM #1

SHEET:

A-611

GMP SET